

EXOTHERMIC CLEAR RESIN SHEET

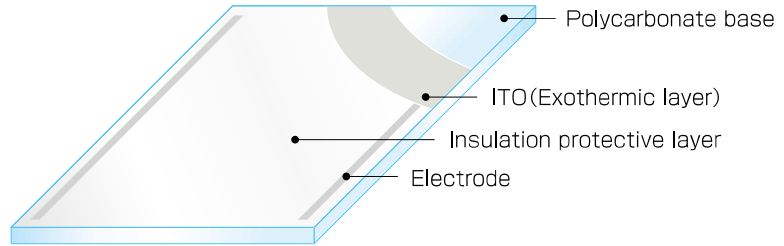
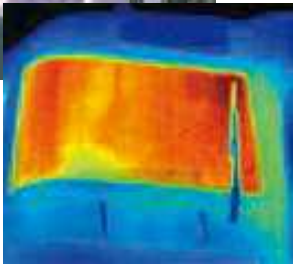
CLEARHEAT®



Exothermal Polycarbonate Plate

Patent Pending

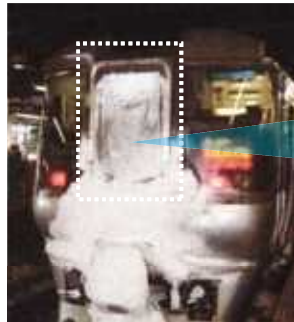
CLEARHEAT®, by demand, has been developed with more powerful abilities of exothermal properties and dew condensation prevention for the polycarbonate resin window which has been experienced as anti-window breaking measure in the railway vehicle.



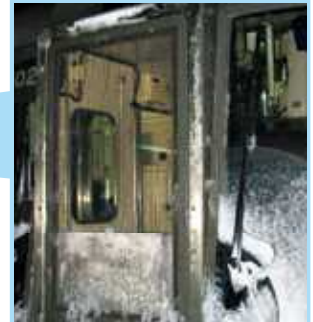
- Melting snow effect and the prevention of dew condensation: the thawing ability is verified under -30°C circumstances.
- High Quality of Transparency: Parallel ray transmittance over 80% ($550\text{W}/\text{m}^2$)
- Ability of Temperature Control Exothermic Performance $\Delta 10^{\circ}\text{C} \sim \Delta 60^{\circ}\text{C}$ Electricity consumption is customizable as customer's request.
- The exothermal function was proved it still worked under the falling weight test (Weight 500g x Height 5m)



Before installed
(Window covered with snow)

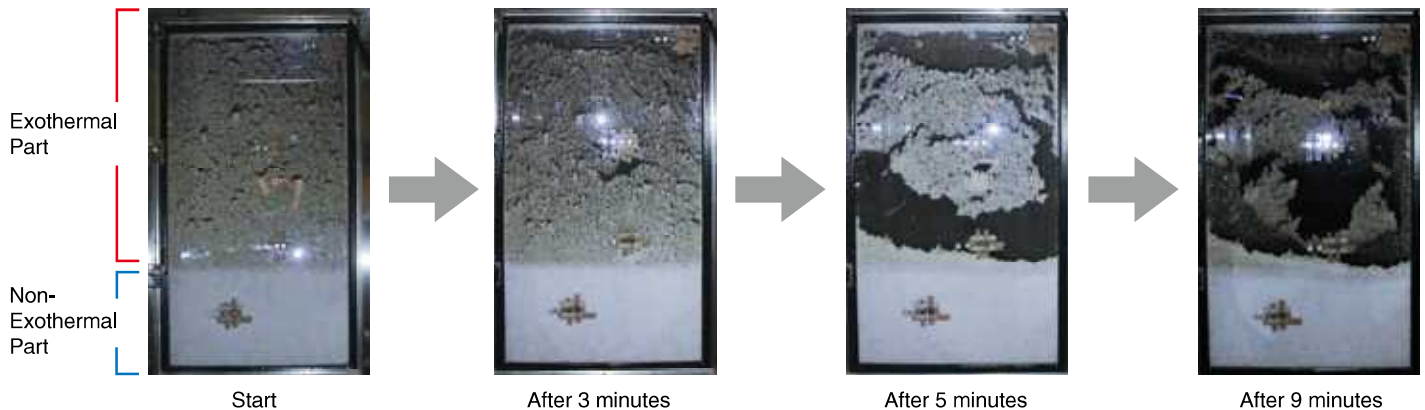


After installed
(Window Magnified)



Melting Snow Process

Snow at the exothermal window surface is thawed when running.



*Figures shown are fixed from actual values or calculated values, and are not guarantees of actual performance.



TOHO SHEET & FRAME CO.,LTD.

Technology Development Department
1812 Kamikouya, Yachiyo City, Chiba Prefecture 276-0022, Japan.
TEL :047-484-6215 F AX: 047-484-6966 URL <http://www.toho-sf.co.jp/>

Tokyo Office
1F Asahi Bldg., 3-12-2 Nihonbashi, Chuo-ku, Tokyo 103-0027, Japan.
TEL :03-3274-6214 F AX: 03-3274-6225

Sapporo Office
Chuo 2-Jo 1-Chome 5-56, Shiroishi-ku, Sapporo, Hokkaido 003-0012, Japan.
TEL :011-811-5161 F AX: 011-811-5163

Tohoku Office
TEL :022-227-7744

Osaka Office
TEL :06-6443-6501